

National & California Bike Rider Fatalities 2004-2014

Data compiled from NHTSA
Traffic Safety Reports

1

Revised 7/2016

Data compiled from:

National Center for Statistics and Analysis. (2016, May). Bicyclists and other cyclists: 2014 data. (Traffic Safety Facts. Report No. DOT HS 812 282).

Washington, DC: National Highway Traffic Safety Administration.

Please Note:

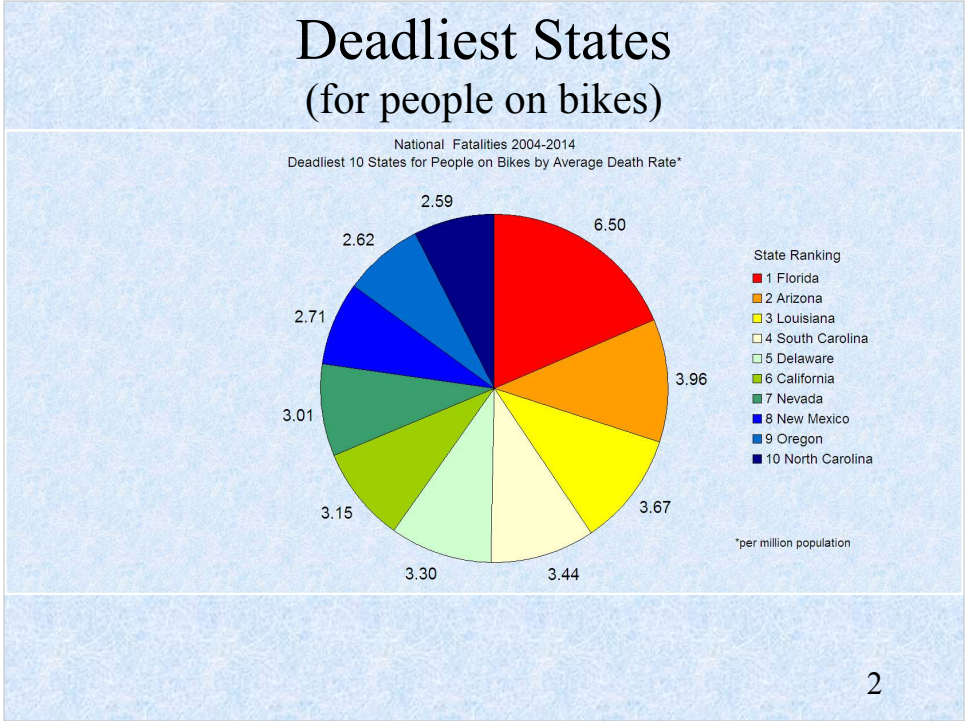
The TSF is *only* concerned with reflecting fatal bike collisions with motor vehicles on public roads, and *excludes* collisions that occurred on private property such as parking lots and driveways, and *excludes* bike fatalities that did not involve motor vehicles ie: solo crashes, bike-on-bike, or bike-on-pedestrian fatal collisions even if they happened on a public roadway.

When including counts from *all* fatal bike collisions, the death rates will increase. Therefore the numbers presented herein should be viewed as a "floor" or foundation for initiating discussions on fatal bike collisions, causes, counter-measures, and measurements for success.

Decoder:

NHTSA = National Highway Traffic Safety Administration

TSF = Traffic Safety Facts



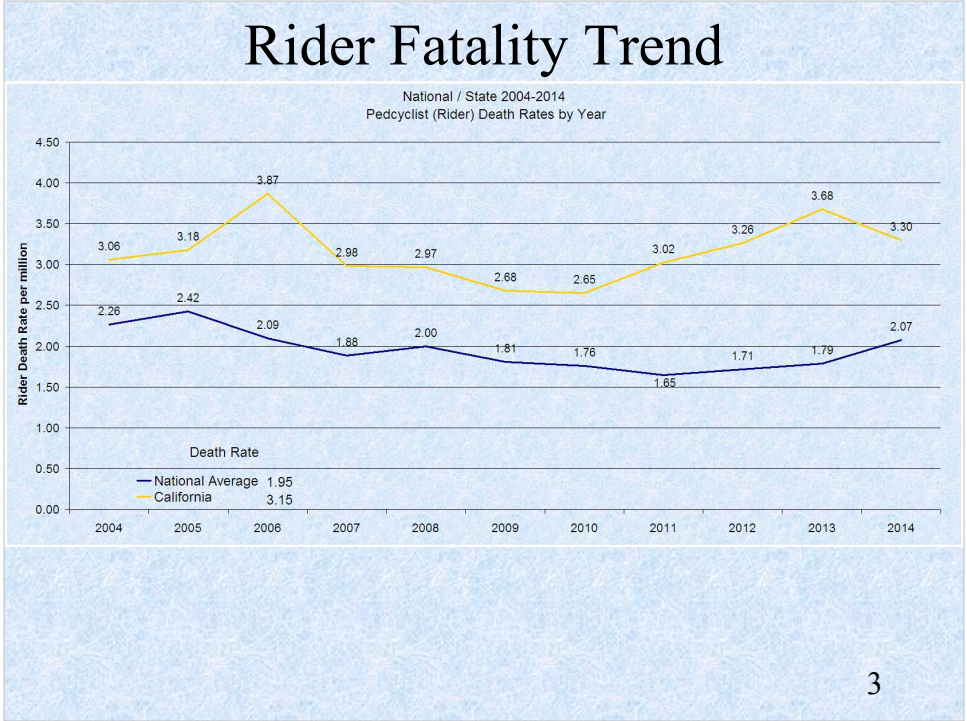
Ten States with the highest rate of people killed while riding their bikes are shown in decreasing order from worst to bad - top to bottom.

California places 6th of 50 States with the highest death rate for people on bikes. Florida leads the nation in killing its bike riders on a per-capita basis.

Why is that?

Here are the 10 States with the lowest average rider death rates ranked better to bad from top to bottom:

Rank / State	Death Rate
1 Vermont	0.29
2 South Dakota	0.78
3 West Virginia	0.79
4 Nebraska	0.81
5 Missouri	0.84
6 Rhode Island	0.95
7 Tennessee	1.11
8 Pennsylvania	1.20
9 Massachusetts	1.22
10 Connecticut	1.23
National Average	1.95

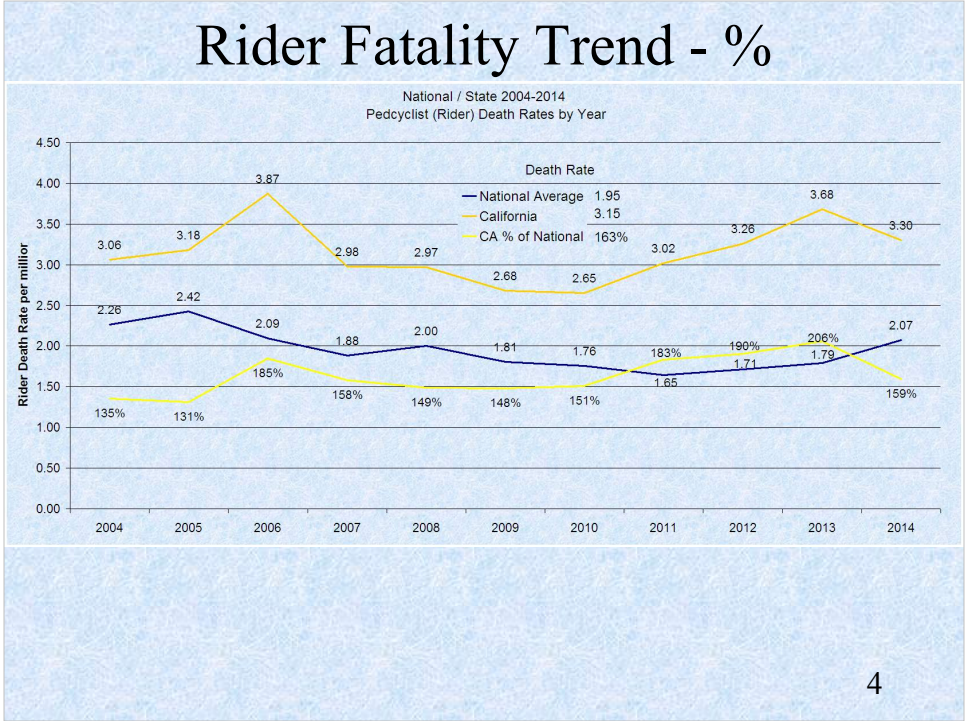


Shown here are National and California trends in bike rider death rates over the years.

Recall that these numbers only reflect fatalities on public roads with motor vehicles and people on bikes, so for the State, the rate is actually higher.

Clearly visible is by how much California is above the National average.

What will be done to lower the "California Line"?



Here is the previous chart with the addition of California's contribution to the National picture expressed as a percentage of the total for each year.

At times California accounts for 1/5th of the National rider fatalities with a low death rate of 2.65 in 2010 and a high of 3.87 in 2006.

California currently averages 3.15 against the National bike death rate of 1.95 for 2004-2014.

National & California Bike Rider Fatalities 2004-2014

End Slide

5

This presentation forms the top of a hierarchical Bike Collision Analysis.

National Data for 2015 will be available in 2017.

California Data for 2015 and 2016 is omitted from this presentation as there is no National Data available to compare with at this time.

Further State and City analysis follow in other presentations.